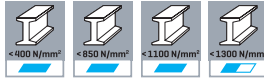


D Winkelfräser

DIN 1833 C

Einsatzbereich:

Empfohlen zum Fräsen von Bau-, Einsatz- und Vergütungsstählen mit normaler Festigkeit bis 1.100 N/mm² sowie für kurzspanende NE-Metalle

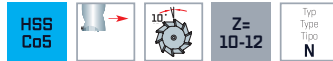


E Dovetail cutters

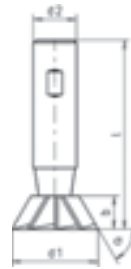
DIN 1833 C

Range of application:

Recommended for milling in construction steels, tempered steels and cementation steels with standard tensile strength up to 1.100 N/mm² and short-chipping of non-ferrous metals.



DIN 1833C



I Frese ad angolo divergente

DIN 1833 C

Impiego:

Fresatura di acciai da costruzione, acciai da cementazione, acciai bonificati con R fino a 1.100 N/mm² e di materiali non ferrosi a truciolo corto.



DIN 1833-B

σ	d1 _{js16} mm	b mm	d2 _{h6} mm	l mm	Z	Code 1394 Art.-Nr.
45°	16	4,0	12	60	10	0 1394016401 00
45°	20	5,0	12	63	10	0 1394020401 00
45°	25	6,3	12	67	10	0 1394025401 00
45°	32	8,0	16	71	12	0 1394032401 00
60°	16	6,3	12	60	10	0 1394016601 00
60°	20	8,0	12	63	10	0 1394020601 00
60°	25	10,0	12	67	10	0 1394025601 00
60°	32	12,5	16	71	12	0 1394032601 00